

CERTIFICATE OF CONFORMITY

According to
Low Voltage Directive (LVD) 2006/95/EC

Certificate No.	NC9085-MED02-09
Product	Inverter
Model /Type ref.	N700E-055LF, N700E-075LF, N700E-110LF
Holder of Certificate	Hyundai Heavy Industries Co., Ltd. 1, Jeonha-Dong, Dong-Gu, Ulsan, Korea, 682-792
Manufacturer	Hyundai Heavy Industries Co., Ltd. 1, Jeonha-Dong, Dong-Gu, Ulsan, Korea, 682-792
Trade Mark	HYUNDAI
Electrical Rating	N700E-055LF: 200-240 V3~; 50/60 Hz; 5,5 kW N700E-075LF: 200-240 V3~; 50/60 Hz; 7,5 kW N700E-110LF: 200-240 V3~; 50/60 Hz; 11,0 kW

This certificate is only valid for products submitted to Underwriters Laboratories for certificate, which are identical to the tested and certified product(s). It is confirmed that a sample of the product has been tested and found in conformity with the following standard(s):

Standard(s): EN 61800-5-1:2003

Detailed specification of the tested and certified product are shown in the following Test Report:

Test Report Ref. No.: 08CA62853-CE Issued Date : Feb 09, 2009 By : UL Korea Ltd.

The Member States of the EU shall presume compliance with the provisions of the Low Voltage Directive (LVD) 2006/95/EC of 27th December, 2006, when the product is carrying the CE-mark of conformity, a Declaration of Conformity with the LVD Directive has been completed and signed by the manufacturer or his authorized representative established within the Community, and when the additional requirements of Annex IV regarding internal production control and the presence of technical documentation are complied with.

This document contains 1 page(s).

Date: Feb 12, 2009



Signature.....
Taek Jeong, Shin
Certification Manager
Conformity Assessment Services

CERTIFICATE OF CONFORMITY

According to
EMC Directive 2004/108/EC

Certificate No.	EMC15673-09-05
Product	INVERTER
Model /Trade ref.	N700E-110LF(Basic), N700E-075LF, N700E-055LF
Holder of Certificate	Hyundai heavy industries Co., Ltd. 1, Jeonha-Dong, Dong-Gu, Ulsan, Korea, 682-792
Manufacturer	Hyundai heavy industries Co., Ltd. 1, Jeonha-Dong, Dong-Gu, Ulsan, Korea, 682-792
Trade Mark	N/A
Electrical Rating	3 Phase 200 ~ 240V±10%, 50/60HZ
Additional Information	This certificate covers the multilisting model name as described on the appendix to this certificate.

This certificate is only valid for products submitted to Underwriters Laboratories for certification, which are identical to the tested and certified product(s). It is confirmed that a sample of the product has been tested and found in conformity with the following standard(s):

Standard(s): EN 61800-3:2004

Detailed specification of the tested and certified product are shown in the following Test Report:

Test Report Ref. No.: 08CA62858-CE Issued Date: Feb. 02, 2009 By: UL Korea Ltd.

The Member States of the EU shall presume compliance with the provisions of the EMC Directive 2004/108/EC of 15th December 2004, when the product is carrying the CE-mark of conformity, a Declaration of Conformity with the EMC Directive has been completed and signed by the manufacturer or his authorized representative established within the Community, and the relevant documentation is available.

This document contains 2 page(s).

Date: February 2, 2009

Signature.....

Taek Jeong Shin
Certification Manager
Conformity Assessment Services



**Underwriters
Laboratories**



UL Korea Ltd.

33rd Fl. Gangnam Finance Center 737,
Yeoksam-dong, Gangnam-gu, Seoul, Korea
Telephone: +82 2 2009 9000 Fax: +82 2 2009 9404

Appendix to

CE EMC Certificate No. EMC15673-09-05

The certificate covers the following :

Additional information:

The following model names listed are multi-listed model names based on the basic test report No. 08CA62858-CE and identical to the basic model in electrical and mechanical construction.

INVERTER MODEL		N700E-055LF	N700E-075LF	N700E-110LF
Max. Applicable Motor (4P, kW)		5.5	7.5	11
Rated input alternating (kVA)	200V	8.3	11.0	15.6
	240V	10.0	13.3	18.7
Rated input alternating voltage		3 Phase 200 ~ 240V±10%, 50/60Hz		
Rated output voltage		3 Phase 200 ~ 240V (This corresponds to input voltage.)		
Rated output Current (A)		24	32	45
Weight (kg)		4.68		
Size (mm)		210 x 275 x 170		
Power Module(IPM)		7MBR-50SC-060 600V/50A, FUJI	7MBR-75SD-060 600V/75A, FUJI	7MBR-100SD-060 600V/100A, FUJI

Date: February 2, 2009



**Underwriters
Laboratories**



UL Korea Ltd.

33rd Fl. Gangnam Finance Center 737 ,
Yeoksam-dong, Gangnam-gu, Seoul, Korea
Telephone: +82 2 2009 9000 Fax: +82 2 2009 9404

CERTIFICATE OF CONFORMITY

According to
Low Voltage Directive (LVD) 2006/95/EC

Certificate No.	NC9085-MED01-09
Product	Inverter
Model /Type ref.	N700E-055HF, N700E-075HF, N700E-110HF
Holder of Certificate	Hyundai Heavy Industries Co., Ltd. 1, Jeonha-Dong, Dong-Gu, Ulsan, Korea, 682-792
Manufacturer	Hyundai Heavy Industries Co., Ltd. 1, Jeonha-Dong, Dong-Gu, Ulsan, Korea, 682-792
Trade Mark	HYUNDAI
Electrical Rating	N700E-055HF: 380-480 V3~; 50/60 Hz; 5,5 kW N700E-075HF: 380-480 V3~; 50/60 Hz; 7,5 kW N700E-110HF: 380-480 V3~; 50/60 Hz; 11,0 kW

This certificate is only valid for products submitted to Underwriters Laboratories for certificate, which are identical to the tested and certified product(s). It is confirmed that a sample of the product has been tested and found in conformity with the following standard(s):

Standard(s): EN 61800-5-1:2003

Detailed specification of the tested and certified product are shown in the following Test Report:

Test Report Ref. No.: 08CA62856-CE Issued Date : Feb 09, 2009 By : UL Korea Ltd.

The Member States of the EU shall presume compliance with the provisions of the Low Voltage Directive (LVD) 2006/95/EC of 27th December, 2006, when the product is carrying the CE-mark of conformity, a Declaration of Conformity with the LVD Directive has been completed and signed by the manufacturer or his authorized representative established within the Community, and when the additional requirements of Annex IV regarding internal production control and the presence of technical documentation are complied with.

This document contains 1 page(s).

Date: Feb 12, 2009



Signature.....
Taek Jeong, Shin
Certification Manager
Conformity Assessment Services

CERTIFICATE OF CONFORMITY

According to
EMC Directive 2004/108/EC

Certificate No.	EMC15673-09-04
Product	INVERTER
Model /Trade ref.	N700E-110HF(Basic), N700E-075HF, N700E-055HF
Holder of Certificate	Hyundai heavy industries Co., Ltd. 1, Jeonha-Dong, Dong-Gu, Ulsan, Korea, 682-792
Manufacturer	Hyundai heavy industries Co., Ltd. 1, Jeonha-Dong, Dong-Gu, Ulsan, Korea, 682-792
Trade Mark	N/A
Electrical Rating	3 Phase 380 ~ 480V±10%, 50/60Hz
Additional Information	This certificate covers the multilisting model name as described on the appendix to this certificate.

This certificate is only valid for products submitted to Underwriters Laboratories for certification, which are identical to the tested and certified product(s). It is confirmed that a sample of the product has been tested and found in conformity with the following standard(s):

Standard(s): EN 61800-3:2004

Detailed specification of the tested and certified product are shown in the following Test Report:

Test Report Ref. No.: 08CA62861-CE Issued Date: Feb. 02, 2009 By: UL Korea Ltd.

The Member States of the EU shall presume compliance with the provisions of the EMC Directive 2004/108/EC of 15th December 2004, when the product is carrying the CE-mark of conformity, a Declaration of Conformity with the EMC Directive has been completed and signed by the manufacturer or his authorized representative established within the Community, and the relevant documentation is available.

This document contains 2 page(s).

Date: February 2, 2009

Signature.....

Taek Jeong Shin
Certification Manager
Conformity Assessment Services



**Underwriters
Laboratories**



UL Korea Ltd.
33rd Fl. Gangnam Finance Center 737,
Yeoksam-dong, Gangnam-gu, Seoul, Korea
Telephone: +82 2 2009 9000 Fax: +82 2 2009 9404

Appendix to CE EMC Certificate No. EMC15673-09-04

The certificate covers the following :

Additional information:

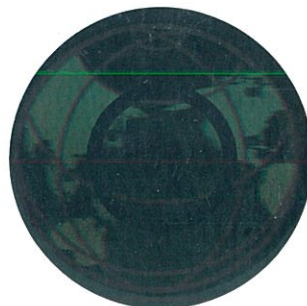
The following model names listed are multi-listed model names based on the basic test report No. 08CA62861-CE and identical to the basic model in electrical and mechanical construction.

INVERTER MODEL		N700E-055HF	N700E-075HF	N700E-110HF
Max. Applicable Motor (4P, kW)		5.5	7.5	11
Rated input alternating (kVA)	400V	8.3	11.0	16.0
	480V	10.0	13.3	19.1
Rated input alternating voltage		3 Phase 380 ~ 480V±10%, 50/60Hz		
Rated output voltage		3 Phase 380 ~ 480V (This corresponds to input voltage.)		
Rated output Current (A)		12	16	23
Weight (kg)		4.68		
Size (mm)		210 × 275 × 170		
Power Module(IPM)		7MBR-25SC-120 1200V/25A, FUJI	7MBR-35SD-120 1200V/35A, FUJI	7MBR-50SD-120 1200V/50A, FUJI

Date: February 2, 2009



**Underwriters
Laboratories**



UL Korea Ltd.

33rd Fl. Gangnam Finance Center 737,
Yeoksam-dong, Gangnam-gu, Seoul, Korea
Telephone: +82 2 2009 9000 Fax: +82 2 2009 9404

CERTIFICATE OF CONFORMITY

According to
Low Voltage Directive (LVD) 2006/95/EC

Certificate No.	NC9085-MED04-09
Product	Inverter
Model /Type ref.	N700E-150LF, N700E-185LF, N700E-220LF
Holder of Certificate	Hyundai Heavy Industries Co., Ltd. 1, Jeonha-Dong, Dong-Gu, Ulsan, Korea, 682-792
Manufacturer	Hyundai Heavy Industries Co., Ltd. 1, Jeonha-Dong, Dong-Gu, Ulsan, Korea, 682-792
Trade Mark	HYUNDAI
Electrical Rating	N700E-150LF: 200-240 V3~; 50/60 Hz; 15,0 kW N700E-185LF: 200-240 V3~; 50/60 Hz; 18,5 kW N700E-220LF: 200-240 V3~; 50/60 Hz; 22,0 kW

This certificate is only valid for products submitted to Underwriters Laboratories for certificate, which are identical to the tested and certified product(s). It is confirmed that a sample of the product has been tested and found in conformity with the following standard(s):

Standard(s): EN 61800-5-1:2003

Detailed specification of the tested and certified product are shown in the following Test Report:

Test Report Ref. No.: 08CA62855-CE Issued Date : Feb 09, 2009 By : UL Korea Ltd.

The Member States of the EU shall presume compliance with the provisions of the Low Voltage Directive (LVD) 2006/95/EC of 27th December, 2006, when the product is carrying the CE-mark of conformity, a Declaration of Conformity with the LVD Directive has been completed and signed by the manufacturer or his authorized representative established within the Community, and when the additional requirements of Annex IV regarding internal production control and the presence of technical documentation are complied with.

This document contains 1 page(s).

Date: Feb 12, 2009



Signature.....
Taek Jeong, Shin
Certification Manager
Conformity Assessment Services

CERTIFICATE OF CONFORMITY

According to
EMC Directive 2004/108/EC

Certificate No.	EMC15673-09-03
Product	INVERTER
Model /Trade ref.	N700E-220LF(Basic), N700E-185LF, N700E-150LF
Holder of Certificate	Hyundai heavy industries Co., Ltd. 1, Jeonha-Dong, Dong-Gu, Ulsan, Korea, 682-792
Manufacturer	Hyundai heavy industries Co., Ltd. 1, Jeonha-Dong, Dong-Gu, Ulsan, Korea, 682-792
Trade Mark	N/A
Electrical Rating	3 Phase 200 ~ 240V±10%, 50/60HZ
Additional Information	This certificate covers the multilisting model name as described on the appendix to this certificate.

This certificate is only valid for products submitted to Underwriters Laboratories for certification, which are identical to the tested and certified product(s). It is confirmed that a sample of the product has been tested and found in conformity with the following standard(s):

Standard(s): EN 61800-3:2004

Detailed specification of the tested and certified product are shown in the following Test Report:

Test Report Ref. No.: 08CA62860-CE Issued Date: Feb. 02, 2009 By: UL Korea Ltd.

The Member States of the EU shall presume compliance with the provisions of the EMC Directive 2004/108/EC of 15th December 2004, when the product is carrying the CE-mark of conformity, a Declaration of Conformity with the EMC Directive has been completed and signed by the manufacturer or his authorized representative established within the Community, and the relevant documentation is available.

This document contains 2 page(s).

Date: February 2, 2009



**Underwriters
Laboratories**



Signature.....

Taek Jeong Shin
Certification Manager
Conformity Assessment Services

UL Korea Ltd.

33rd Fl. Gangnam Finance Center 737,
Yeoksam-dong, Gangnam-gu, Seoul, Korea
Telephone:+82 2 2009 9000 Fax:+82 2 2009 9404

Appendix to

CE EMC Certificate No. EMC15673-09-03

The certificate covers the following :

Additional information:

The following model names listed are multi-listed model names based on the basic test report No. 08CA62860-CE and identical to the basic model in electrical and mechanical construction

INVERTER MODEL		N700E-150LF	N700E-185LF	N700E-220LF
Max. Applicable Motor (4P, kW)		15	18.5	22
Rated input alternating (kVA)	200V	22.2	26.3	31.2
	240V	26.6	31.6	37.4
Rated input alternating voltage		3 Phase 200 ~ 240V±10%, 50/60Hz		
Rated output voltage		3 Phase 200 ~ 240V (This corresponds to input voltage.)		
Rated output Current (A)		64	76	90
Weight (kg)		6.88		
Size (mm)		250 × 390 × 190		
Power Module(IPM)		CM150RX-12A 600V/150A MITSUBISHI	CM200RX-12A 600V/200A MITSUBISHI	CM200RX-12A 600V/200A MITSUBISHI
Diode Module		SKDH 146/16-L75 1600V/140A, Semikron	SKDH 146/16-L75 1600V/140A, Semikron	SKDH 146/16-L75 1600V/140A, Semikron

Date: February 2, 2009



**Underwriters
Laboratories**



UL Korea Ltd.

33rd Fl. Gangnam Finance Center 737 ,
Yeoksam-dong, Gangnam-gu, Seoul, Korea
Telephone: +82 2 2009 9000 Fax: +82 2 2009 9404

CERTIFICATE OF CONFORMITY

According to
Low Voltage Directive (LVD) 2006/95/EC

Certificate No.	NC9085-MED03-09
Product	Inverter
Model /Type ref.	N700E-150HF, N700E-185HF, N700E-220HF
Holder of Certificate	Hyundai Heavy Industries Co., Ltd. 1, Jeonha-Dong, Dong-Gu, Ulsan, Korea, 682-792
Manufacturer	Hyundai Heavy Industries Co., Ltd. 1, Jeonha-Dong, Dong-Gu, Ulsan, Korea, 682-792
Trade Mark	HYUNDAI
Electrical Rating	N700E-150HF: 380-480 V3~; 50/60 Hz; 15,0kW N700E-185HF: 380-480 V3~; 50/60 Hz; 18,5kW N700E-220HF: 380-480 V3~; 50/60 Hz; 22,0 kW

This certificate is only valid for products submitted to Underwriters Laboratories for certificate, which are identical to the tested and certified product(s). It is confirmed that a sample of the product has been tested and found in conformity with the following standard(s):

Standard(s): EN 61800-5-1:2003

Detailed specification of the tested and certified product are shown in the following Test Report:

Test Report Ref. No.: 08CA62857-CE Issued Date : Feb 09, 2009 By : UL Korea Ltd.

The Member States of the EU shall presume compliance with the provisions of the Low Voltage Directive (LVD) 2006/95/EC of 27th December, 2006, when the product is carrying the CE-mark of conformity, a Declaration of Conformity with the LVD Directive has been completed and signed by the manufacturer or his authorized representative established within the Community, and when the additional requirements of Annex IV regarding internal production control and the presence of technical documentation are complied with.

This document contains 1 page(s).

Date: Feb 12, 2009



Signature.....
Taek Jeong, Shin
Certification Manager
Conformity Assessment Services

CERTIFICATE OF CONFORMITY

According to
EMC Directive 2004/108/EC

Certificate No.	EMC15673-09-06
Product	INVERTER
Model /Trade ref.	N700E-220HF(Basic), N700E-185HF, N700E-150HF
Holder of Certificate	Hyundai heavy industries Co., Ltd. 1, Jeonha-Dong, Dong-Gu, Ulsan, Korea, 682-792
Manufacturer	Hyundai heavy industries Co., Ltd. 1, Jeonha-Dong, Dong-Gu, Ulsan, Korea, 682-792
Trade Mark	N/A
Electrical Rating	3 Phase 380 ~ 480V±10%, 50/60Hz
Additional Information	This certificate covers the multilisting model name as described on the appendix to this certificate.

This certificate is only valid for products submitted to Underwriters Laboratories for certification, which are identical to the tested and certified product(s). It is confirmed that a sample of the product has been tested and found in conformity with the following standard(s):

Standard(s): EN 61800-3:2004

Detailed specification of the tested and certified product are shown in the following Test Report:

Test Report Ref. No.: 08CA62862-CE Issued Date: Feb. 02, 2009 By: UL Korea Ltd.

The Member States of the EU shall presume compliance with the provisions of the EMC Directive 2004/108/EC of 15th December 2004, when the product is carrying the CE-mark of conformity, a Declaration of Conformity with the EMC Directive has been completed and signed by the manufacturer or his authorized representative established within the Community, and the relevant documentation is available.

This document contains 2 page(s).

Date: February 2, 2009

Signature.....

Taek Jeong Shin
Certification Manager
Conformity Assessment Services



**Underwriters
Laboratories**



UL Korea Ltd.
33rd Fl. Gangnam Finance Center 737,
Yeoksam-dong, Gangnam-gu, Seoul, Korea
Telephone:+82 2 2009 9000 Fax:+82 2 2009 9404

Appendix to

CE EMC Certificate No. EMC15673-09-06

The certificate covers the following :

Additional information:

The following model names listed are multi-listed model names based on the basic test report No. 08CA62862-CE and identical to the basic model in electrical and mechanical construction

INVERTER MODEL		N700E-150HF	N700E-185HF	N700E-220HF
Max. Applicable Motor (4P, kW)		15	18.5	22
Rated input alternating (kVA)	400V	22.2	26.3	31.2
	480V	26.6	31.6	37.4
Rated input alternating voltage		3 Phase 380 ~ 480V±10%, 50/60Hz		
Rated output voltage		3 Phase 380 ~ 480V (This corresponds to input voltage.)		
Rated output Current (A)		32	38	45
Weight (kg)		6.88		
Size (mm)		250 x 390 x 190		
Power Module(IPM)		CM75RX-24A 1200V/75A MITSUBISHI	CM100RX-24A 1200V/100A MITSUBISHI	CM100RX-24A 1200V/100A MITSUBISHI
Diode Module		SKDH 146/16-L75 1600V/140A, Semikron	SKDH 146/16-L75 1600V/140A, Semikron	SKDH 146/16-L75 1600V/140A, Semikron

Date: February 2, 2009



**Underwriters
Laboratories**



UL Korea Ltd.

33rd Fl. Gangnam Finance Center 737,
Yeoksam-dong, Gangnam-gu, Seoul, Korea
Telephone: +82 2 2009 9000 Fax: +82 2 2009 9404



NMMS.E205705 Power Conversion Equipment

[Page Bottom](#)

Power Conversion Equipment

[See General Information for Power Conversion Equipment](#)

HYUNDAI HEAVY INDUSTRIES CO LTD

E205705

1 CHEON HA-DONG

DONG-KU

ULSAN, KYUNGNAM 682-060 REPUBLIC OF KOREA

Open type, AC Adjustable Speed Drives: N100-plus followed by -002, -004, -007, -015, -022 or -037, followed by SF, LF or HF.

N100plus followed by 055, 075, followed by LF, HF.

N700 followed by -055, -075, -110, -150, -185, -220, -300, -370, -450, -550, 750, 900 or 1100, followed by LF or HF.

N700E followed by -055, -075, -110, -150, -185 or -220, followed by LF or HF.

[Last Updated](#) on 2009-07-08

[Questions?](#)

[Notice of Disclaimer](#)

[Page Top](#)

[Copyright ?2009 Underwriters Laboratories Inc.®](#)

The appearance of a company's name or product in this database does not in itself assure that products so identified have been manufactured under UL's Follow-Up Service. Only those products bearing the UL Mark should be considered to be Listed and covered under UL's Follow-Up Service. Always look for the Mark on the product.

UL permits the reproduction of the material contained in the Online Certification Directory subject to the following conditions: 1. The Guide Information, Designs and/or Listings (files) must be presented in their entirety and in a non-misleading manner, without any manipulation of the data (or drawings). 2. The statement "Reprinted from the Online Certifications Directory with permission from Underwriters Laboratories Inc." must appear adjacent to the extracted material. In addition, the reprinted material must include a copyright notice in the following format: "Copyright © 2009 Underwriters Laboratories Inc.®"

An independent organization working for a safer world with integrity, precision and knowledge.





NMMS7.E205705 Power Conversion Equipment Certified for Canada

[Page Bottom](#)

Power Conversion Equipment Certified for Canada

[See General Information for Power Conversion Equipment Certified for Canada](#)

HYUNDAI HEAVY INDUSTRIES CO LTD

E205705

1 CHEON HA-DONG

DONG-KU

ULSAN, KYUNGNAM 682-060 REPUBLIC OF KOREA

Open type, AC Adjustable Speed Drives: N100-plus followed by -002, -004, -007, -015, -022 or -037, followed by SF, LF or HF.

N100plus followed by 055, 075, followed by LF, HF.

N700 followed by -055, -075, -110, -150, -185, -220, -300, -370, -450, -550, 750, 900 or 1100, followed by LF or HF.

N700E followed by -055, -075, -110, -150, -185 or -220, followed by LF or HF.

[Last Updated](#) on 2009-07-08

[Questions?](#)

[Notice of Disclaimer](#)

[Page Top](#)

[Copyright ?2009 Underwriters Laboratories Inc.®](#)

The appearance of a company's name or product in this database does not in itself assure that products so identified have been manufactured under UL's Follow-Up Service. Only those products bearing the UL Mark should be considered to be Listed and covered under UL's Follow-Up Service. Always look for the Mark on the product.

UL permits the reproduction of the material contained in the Online Certification Directory subject to the following conditions: 1. The Guide Information, Designs and/or Listings (files) must be presented in their entirety and in a non-misleading manner, without any manipulation of the data (or drawings). 2. The statement "Reprinted from the Online Certifications Directory with permission from Underwriters Laboratories Inc." must appear adjacent to the extracted material. In addition, the reprinted material must include a copyright notice in the following format: "Copyright © 2009 Underwriters Laboratories Inc.®"

An independent organization working for a safer world with integrity, precision and knowledge.





ООО "ТД "Степмотор", Адрес юридический: 194044, г. С-Петербург, ул. Менделеевская, дом 2.,
Фактический адрес: тот же, телефон: (812) 953-07-32, 8-800-5555-068, ИНН/КПП
7804501708/780401001,
Код по ЕГРПО(ОГРН) 1137847042013. www.stepmotor.ru market@stepmotor.ru

Извещаем Вас об изменении наших реквизитов:

Полное наименование: Общество с ограниченной ответственностью "Торговый дом
"Степмотор"

Сокращенное наименование: **ООО "ТД "Степмотор"**

Адрес юридич.: 194044, г. С-Петербург, ул. Менделеевская, дом 2.

Фактический адрес: тот же

Телефон: (812) 953-07-32, 8-800-5555-068

ИНН/КПП 7804501708/780401001

р/с 40702810480040000098 в Филиале ОПЕРУ ОАО Банк ВТБ в Санкт-Петербурге
г. Санкт-Петербург

к/с: № 30101810200000000704 БИК 044030704

Код по ЕГРПО(ОГРН) 1137847042013

Генеральный директор Петров В.А.