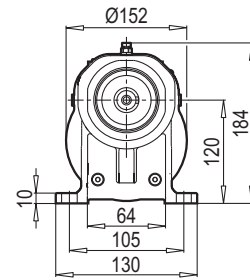
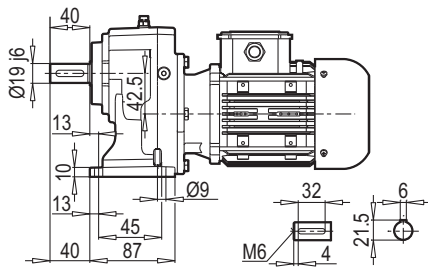
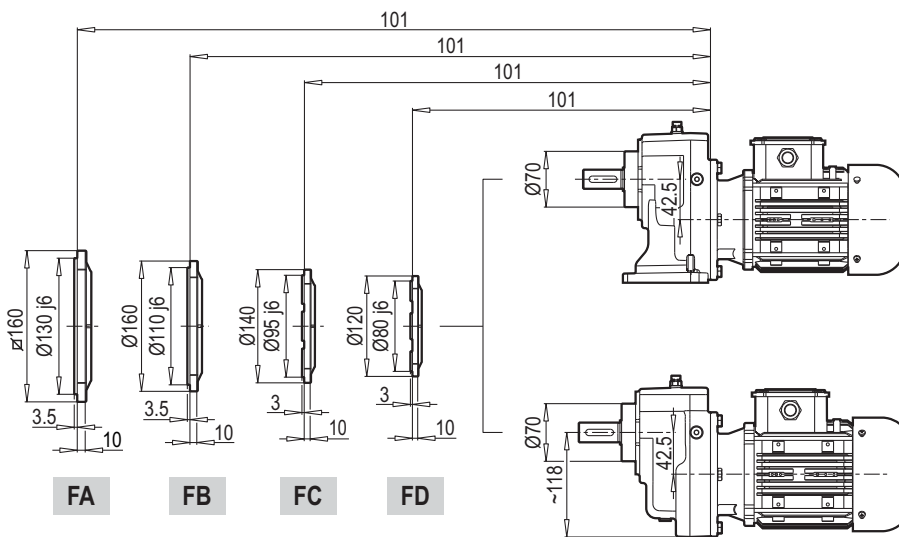
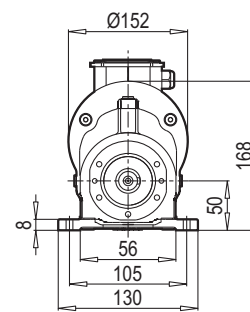
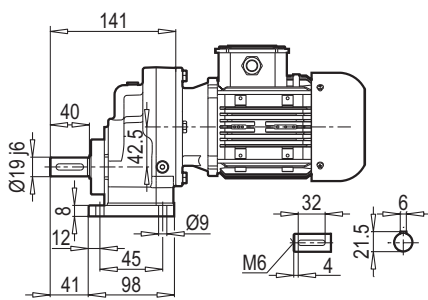


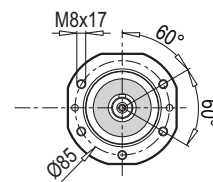
A 301



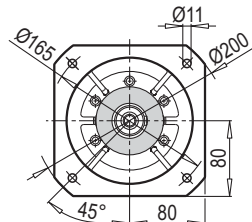
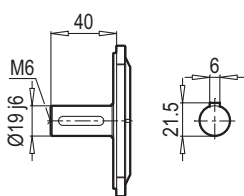
AF-M 301



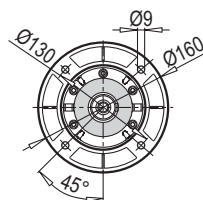
AF 301



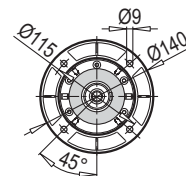
F 301



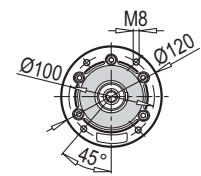
FA



FB

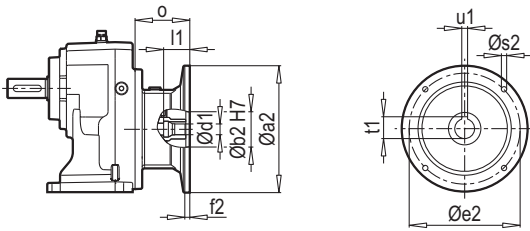


FC

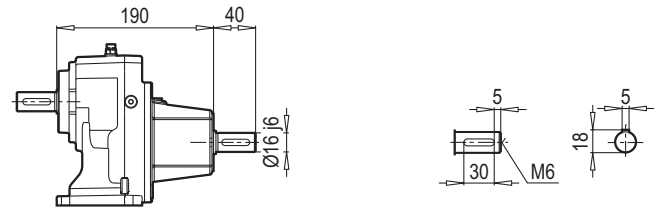


FD

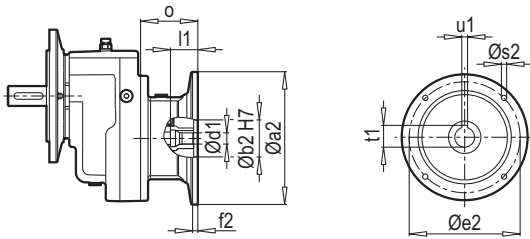
A 301 PAM B5/B14



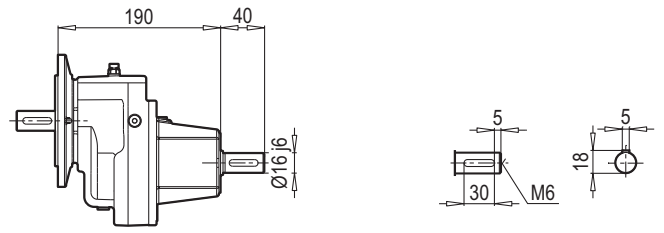
A 301 W



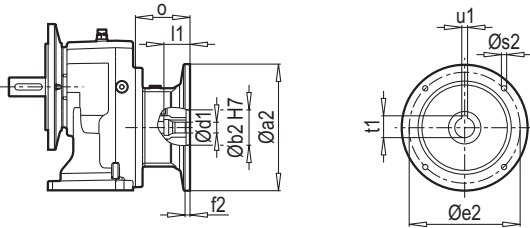
F 301 PAM B5/B14



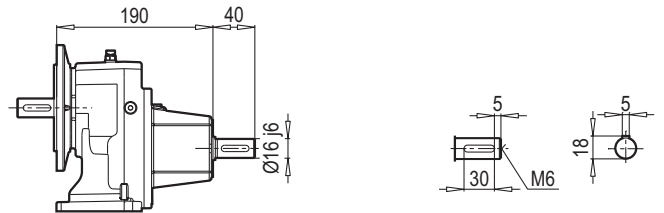
F 301 W



AF 301 PAM B5/B14

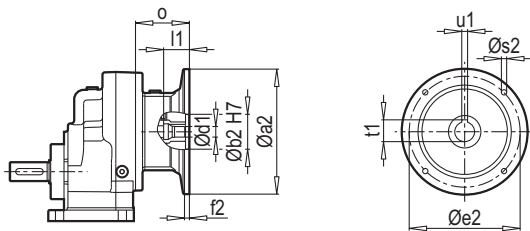


AF 301 W

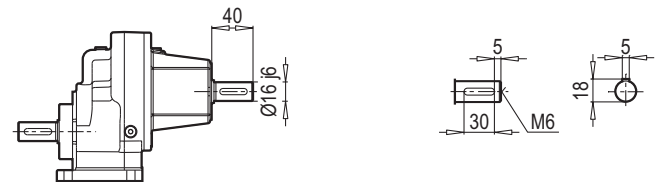


W ~ Kg	
A/F 301	10

AF-M 301 PAM B5/B14



AF-M 301 W



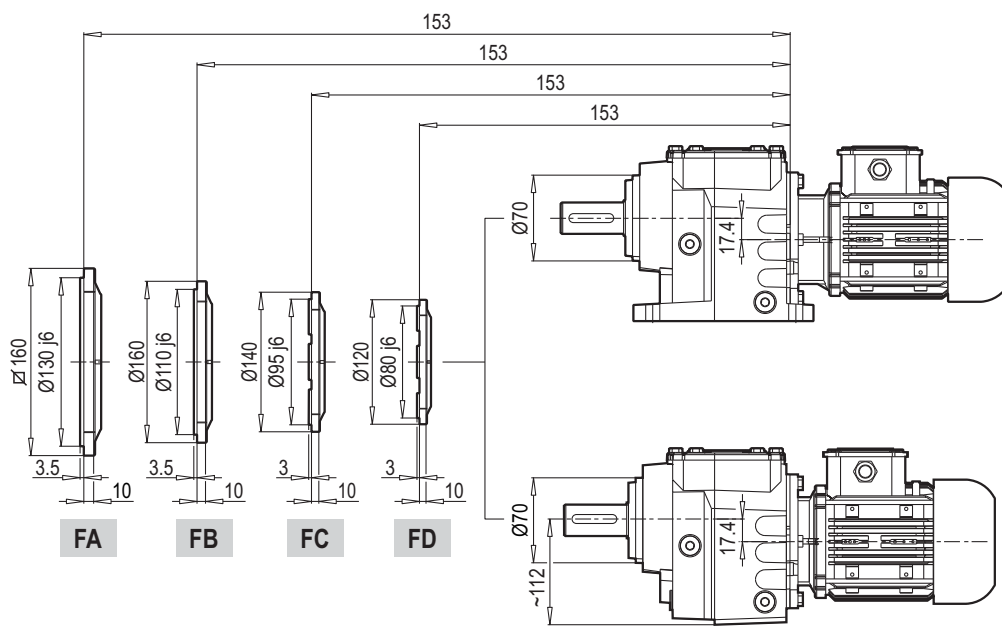
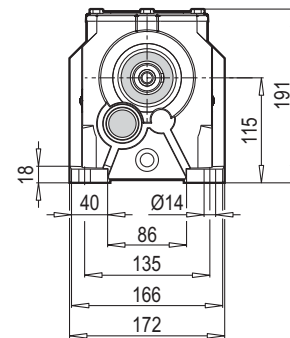
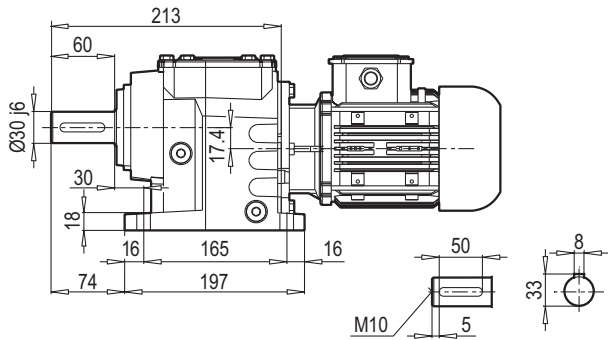
Typ / Type / Tipo Type / Tipo	PAM B5	Øa2	Øb2	Øe2	f2	Øs2	Ød1	l1	t1	u1	o
A/F 301	71	160	110	130	5	M8	14	32	16.3	5	69
	80	200	130	165	5	M10	19	42	21.8	6	90
	90	200	130	165	5	M10	24	52	27.3	8	90

~ Kg	
PAM B5	A/F 301
71	6
80	6.5
90	6.5

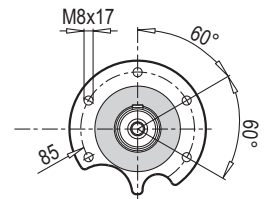
Typ / Type / Tipo Type / Tipo	PAM B14	Øa2	Øb2	Øe2	f2	Øs2	Ød1	l1	t1	u1	o
A/F 301	63	90	60	75	2.5	6	11	32	16.3	5	69
	71	105	70	85	2.5	7	14	42	21.8	6	90
	80	120	80	100	3	7	19	52	27.3	8	90

~ Kg	
PAM B14	A/F 301
63	5
71	5.5
80	5.5

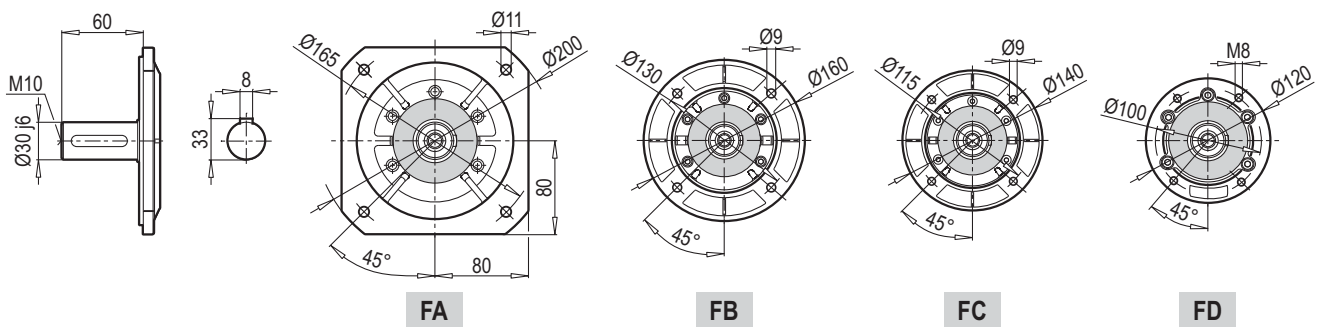
A 302-303



AF 302-303



F 302-303



Редуктор	i	4- пол. 50Гц 1400об/мин n ₂ [об/мин]	M _a макс f _B =1 4 - пол. [Нм]	P ₁ макс W f _B ≥ 1			PAM - IEC											
				4 - пол. 1400об/мин [кВт]	FR1 [кН]	FR2 (M) [кН]												
A303 F303 W 165.33 1 + PAM - IEC 86.96 1	282.17	5.0	300	0.16	1.4	6.6	63	71										
	227.56	6.2	300	0.19	1.4	6.6	63	71										
	205.01	6.8	300	0.21	1.4	6.6	63	71										
	141.89	8.5	300	0.27	1.4	6.6	63	71										
	125.65	9.9	300	0.31	1.4	6.6	63	71	80	90								
	114.42	11.1	300	0.35	1.3	6.6	63	71										
	86.96	12.2	300	0.38	1.3	6.6	63	71	80	90								
	76.42	16.1	300	0.51	1.3	6.6	63	71	80	90								
	61.63	18.3	300	0.58	1.3	6.6	63	71	80	90								
	61.63	22.7	300	0.71	1.3	6.6	63	71	80	90								
A302 F302 W 38.33 1 + PAM - IEC 26.45 1	55.03	25.4	280	0.75	1.3	6.6	71	80	90									
	48.22	29.0	280	0.85	1.2	6.6	71	80	90									
	44.38	31.5	280	0.93	1.2	6.6	71	80	90									
	38.33	36.5	280	1.07	1.2	6.6	71	80	90									
	34.62	40.4	280	1.19	1.2	6.6	71	80	90									
	30.91	45.3	280	1.33	1.1	6.6	71	80	90									
	27.92	50.1	280	1.47	1.1	6.6	71	80	90									
	26.45	52.9	260	1.44	1.1	6.6	71	80	90	100	112							
	23.49	59.6	260	1.62	1.0	6.3	71	80	90									
	21.33	65.6	250	1.72	1.0	6.1	71	80	90	100	112							
	19.29	72.6	250	1.90	1.0	5.8	71	80	90	100	112							
	16.21	86.3	250	2.26	0.9	5.4	71	80	90	100	112							
	13.81	101.4	250	2.65	0.8	5.0	71	80	90	100	112							
	12.00	116.7	250	3.05	0.7	4.7	71	80	90	100	112							
	10.50	133.4	240	3.35	0.6	4.5	71	80	90	100	112							
	9.11	153.7	210	3.38	0.6	4.4	71	80	90	100	112							
7.34	190.6	160	3.19	0.7	4.4	71	80	90	100	112								
5.58	250.8	160	4.20	0.4	3.9	71	80	90	100	112								
A301 F301 W 5.58 1 + PAM - IEC 3.16 1	8.88	157.7	55	0.91	1.2	1.0	71	80	90									
	7.78	180.0	50	0.94	1.2	1.0	71	80	90									
	6.18	226.5	50	1.19	1.2	0.9	71	80	90									
	5.58	250.7	50	1.31	1.2	0.9	71	80	90									
	5.08	275.8	45	1.30	1.2	0.9	71	80	90									
	4.27	328.1	45	1.55	1.1	0.8	71	80	90									
	3.65	383.9	45	1.81	1.1	0.8	71	80	90									
	3.16	443.3	40	1.86	1.1	0.7	71	80	90									
	2.76	506.9	30	1.59	1.1	0.7	71	80	90									
	2.59	540.4	30	1.70	1.1	0.7	71	80	90									
2.04	686.8	25	1.80	1.1	0.7	71	80	90										
1.47	953.2	25	2.50	1.0	0.6	71	80	90										